

Natural Preservation

A photograph of a forest stream. The water is clear and flows over large, moss-covered rocks. The surrounding trees are tall and thin, with dense green foliage. The scene is peaceful and natural.

The natural drainage and ventilation paths should be restored, the anatomy changed as little as possible, and the mucosa preserved to the greatest extent.

Prof. Heinz Stammberger, M.D.!

Balloon Sinuplasty™ Technology

Remodeling Bone to Create Durable Openings²

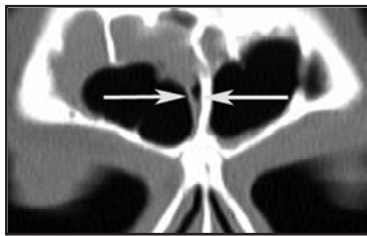


Fig 1: Pre-op CT depicts massive type IV frontal cell obstruction and frontal sinus opacification.

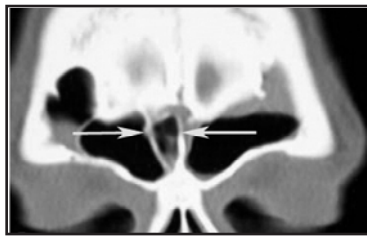


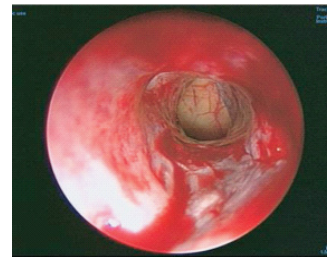
Fig 2: 6-month post-op CT shows type IV frontal cell's medial cell moved laterally.



Fig 3: 6-month post-op CT reveals lateral movement opened the sinus drainage pathway. (Fig 2 & 3 are 2.5 mm apart). Note that the sinus opacification has cleared.

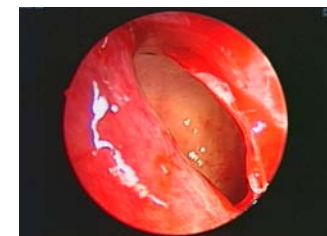
CT images compliments of Frederick A. Kuhn, M.D.

Minimally Invasive to Preserve Native Mucosa



Frontal

(Intraoperative image compliments of Frederick A. Kuhn, M.D.)



Maxillary

(Intraoperative image compliments of Frederick A. Kuhn, M.D.)



Sphenoid

(Intraoperative image compliments of Brian H. Weeks, M.D.)

Safety

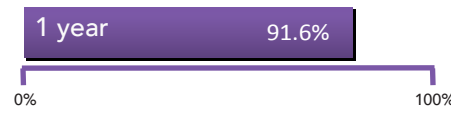
NO major adverse events.

| Clinical Studies | Major Adverse Events (n=patients) |
|------------------|-----------------------------------|
| CLEAR 6 mo. | 0 (n=115) ² |
| CLEAR 1 yr. | 0 (n=66) ² |
| CLEAR 2 yr. | 0 (n=65) ³ |
| Registry | 0 (n=1036) ⁴ |

Efficacy

CLEAR Results²

- Functional patency (% of sinus')



Registry Results⁴

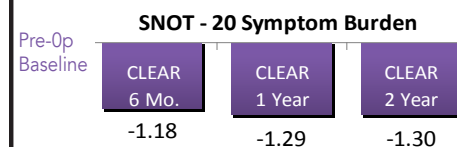
- Unrevised patients



Patient Satisfaction

CLEAR Results³

- Clinically significant symptom reduction at every time period



Registry Results at 40 weeks⁴

- 95.2% improvement in sinus symptoms

Acclarent, Inc.
1525-B O'Brien Drive
Menlo Park, CA 94025
U.S.A.

TOLL FREE: 1-877-SPLASTY (1-877-775-2789)

MAIN: 1-650-687-5888

FAX: 1-650-687-5886

EMAIL: info@acclarent.com

WEB: www.acclarent.com

Acclarent™

Shaping the Future of ENT Care™